

Education Performance 2012

Key Stage 4

Presentation to accompany report

ALL Data is FINAL

A greener place Man gwyrddach



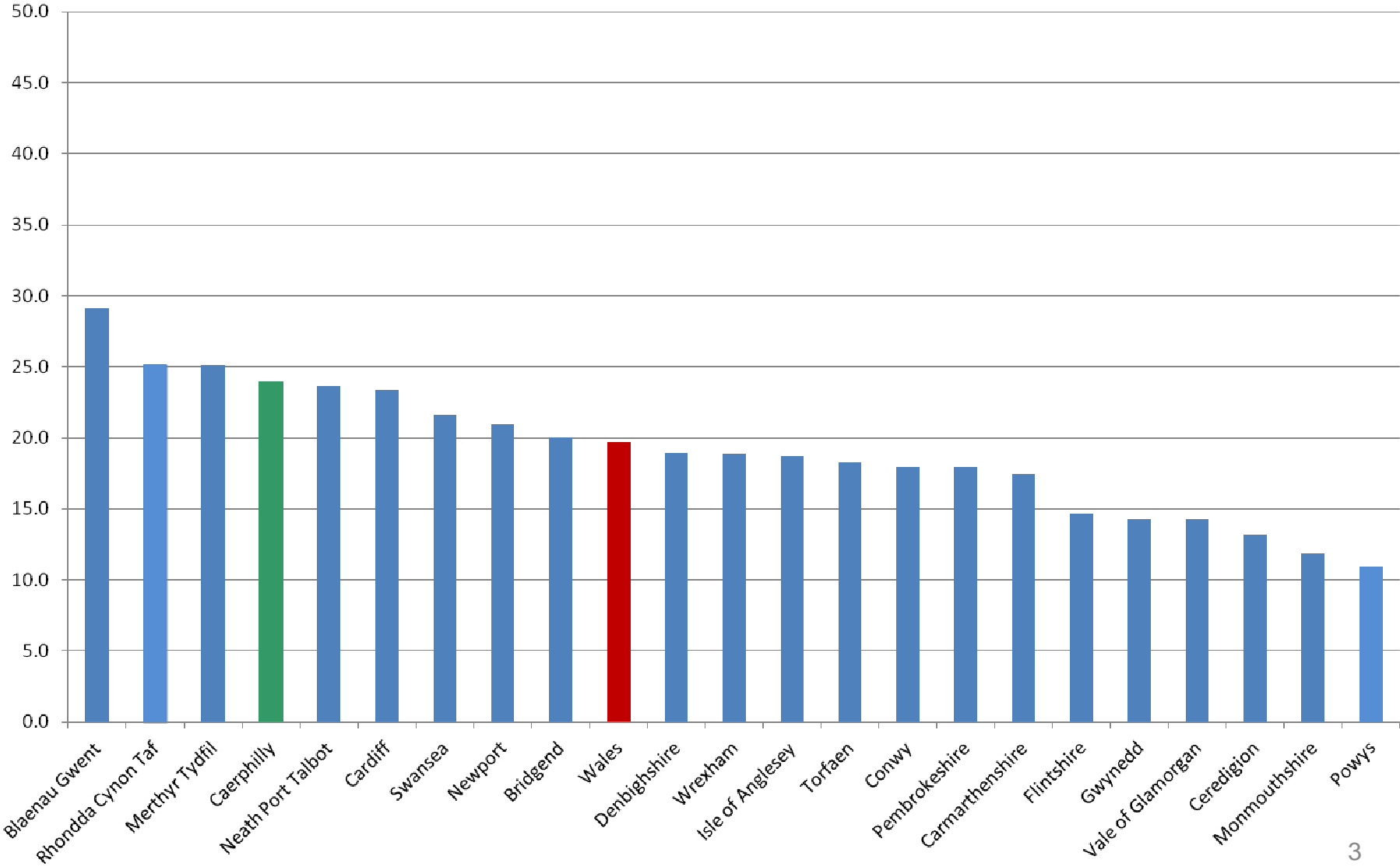
Outline

- FSM
- Definitions and Terminology
- KS4 Summary Table
- 5 Year Progress on the 6 main indicators
- Individual School Performance
- Banding positions

A greener place Man gwyrdach



FSM% Eligibility by LA – 2011-12



Definition and Terminology

Performance is measured as the % of the cohort achieving an indicator:

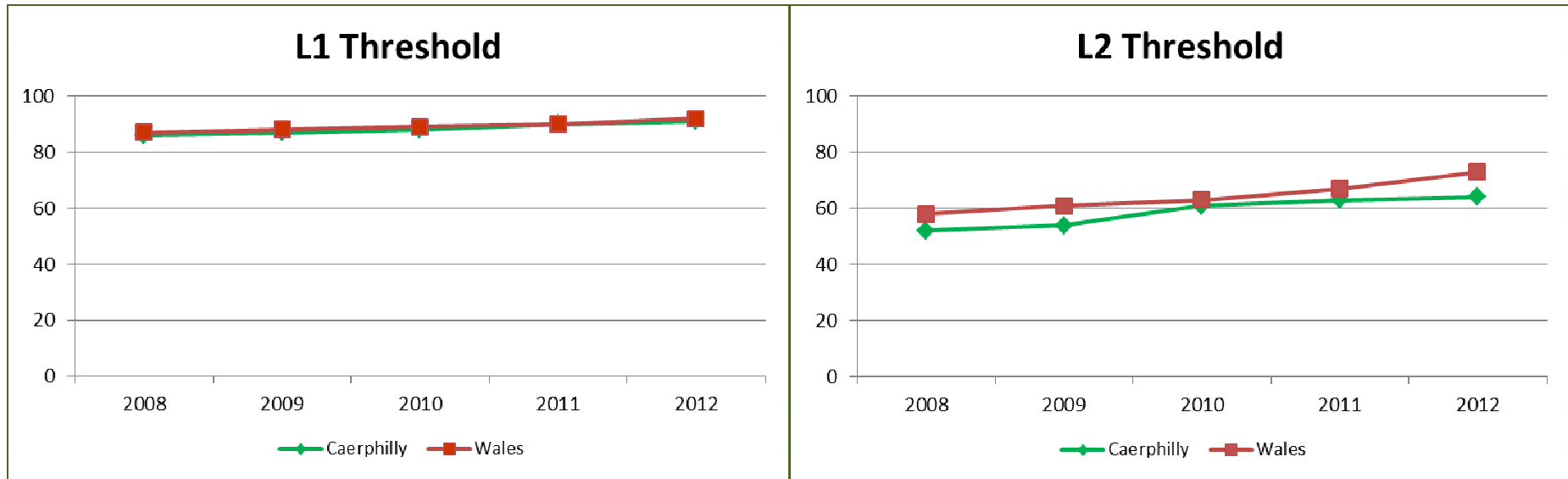
Indicator	Definition	Abbreviation
Level 1 Threshold	formerly 5 GCSE at A*-G, but including a range of vocational equivalents *1	L1
Level 2 Threshold	formerly 5 GCSE at A*-C, but including a range of vocational equivalents *1	L2
Level 2 Threshold including E/W&M	L2 but including English or Welsh and Mathematics	L2+
Core Subject Indicator	Language, Maths and Science GCSE or equivalent in combination	CSI
Average Wider Points Score	Measures the quality and volume of qualifications the average learner in a school achieves	AWPS
Capped Points Score	Measures the quality of the best 8 qualifications the average learner in a school achieves	CPS
No Qualifications	The % of pupils in a school that leave with no recognised qualification	NQ

*1 Note that vocational qualifications may have a 'volume' of learning equivalent to more than 1 GCSE

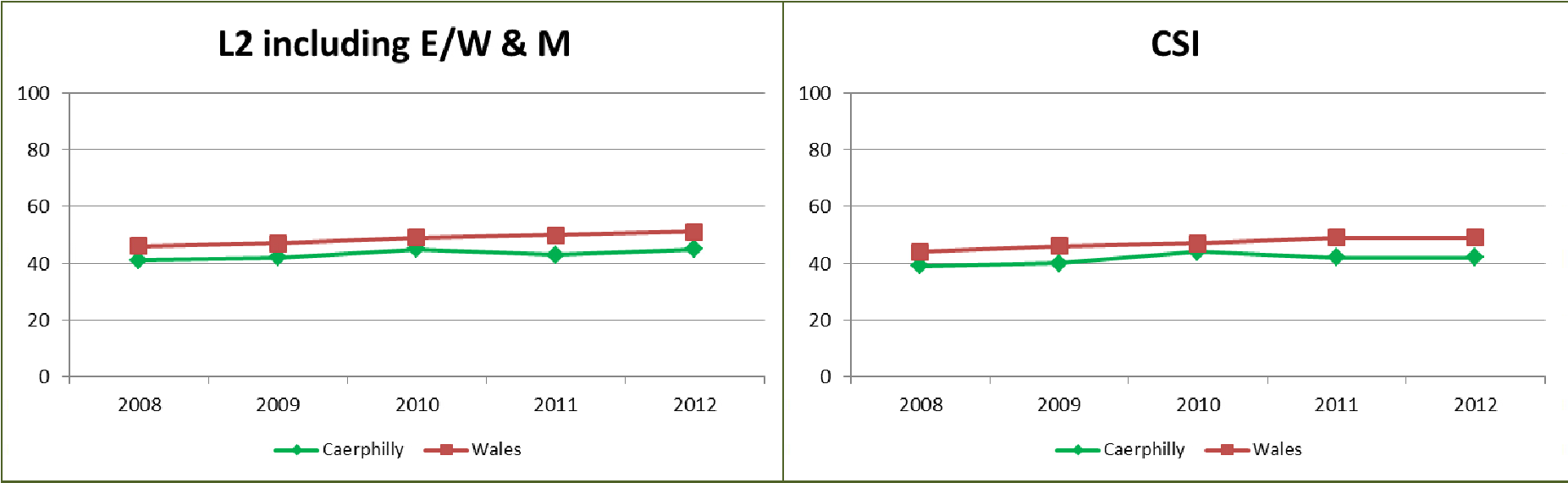
KS4 Summary Table

A	B	C	D	E	F	G	H	I	J
Indicator	Caerphilly 2011	Caerphilly 2012	Wales 2011	Wales 2012	Caerphilly Rank 2011	Caerphilly Rank 2012	Rank Change (+/-)	Caerphilly 2012 vs 2011	Caerphilly vs Wales 2012
L1	90.0%	91.5%	91.8%	91.8%	16	15	+1	1.5%	-0.3%
L2	62.5%	64.1%	67.3%	72.6%	18	21	-3	1.6%	-8.5%
L2+	43.3%	45.1%	50.1%	51.1%	19	19	0	1.8%	-6.0%
CSI	41.8%	43.9%	48.7%	48.9%	19	17	+2	2.1%	-5.0%
AWPS	404	430	423	465	16	17	-1	26	-35
CPS	302	311	312	323	17	17	0	9	-12
NQ (9)	0.4%	0.4%	0.6%	0.4%	10	16	-6	0.0%	0.0%

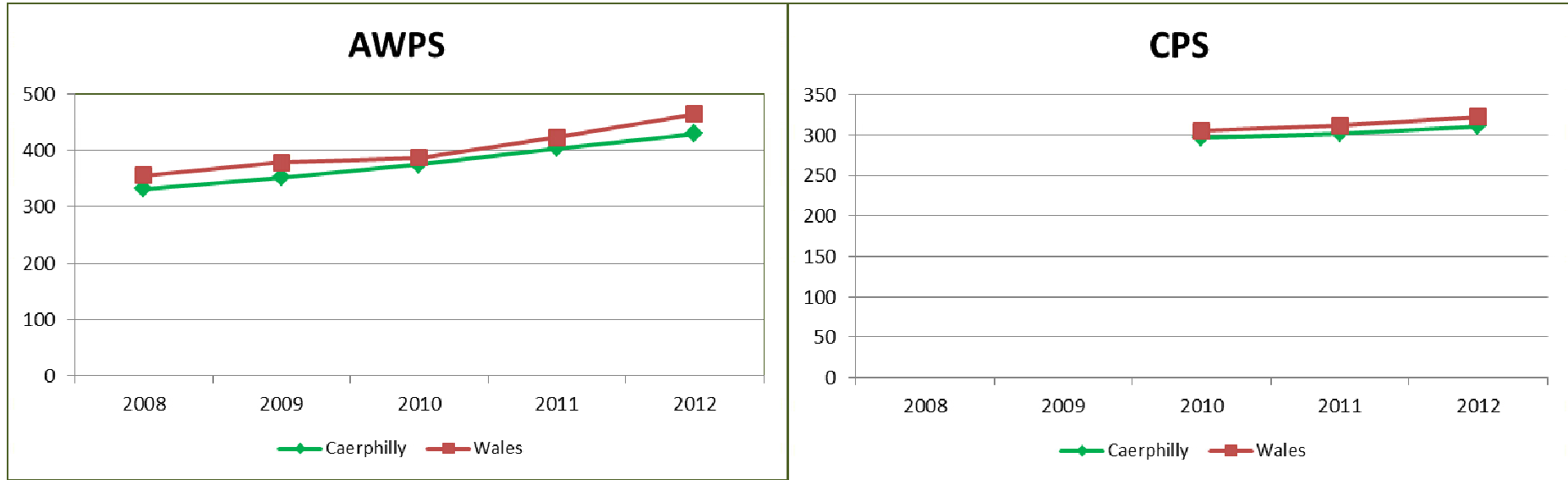
L1 and L2 Progress



L2+ (E/W&M) and CSI Progress



AWPS & CPS Progress



'No Qualifications'



KS4 Summary

Indicator	Summary
Level 1 Threshold	Performance on this indicator has closed to be slightly below the all Wales average. Caerphilly rank position has improved from 16 th to 15 th .
Level 2 Threshold	Performance rose by 1.6%, but there was a 5.3% rise nationally. After almost closing with the national average for the first time in 2010, the gap has widened again in the last 2 years. Caerphilly rank position has fallen from 18 th to 21 st .
Level 2 Threshold including E/W&M	After a 2% fall last year, there was a 2% rise this year. The key subjects which affect performance in this indicator are mathematics and to a lesser extent English / Welsh. Caerphilly rank position remains the same at 19 th .
Core Subject Indicator	After a 2% fall last year, the indicator remained the same this year. The key subjects which affect performance in this indicator are again mathematics and to a lesser extent English / Welsh. Caerphilly's rank position has improved from 19 th to 17 th .
Average Wider Points Score	This indicator rose by 26 points this year, but Wales rose by 32. Caerphilly's rank position fell from 16 th to 17 th .
Capped Points Score	This indicator was introduced by the Welsh Government in 2010. Since that time Caerphilly has improved by 14 points and Wales by 18 points. Caerphilly's rank position remained the same at 17 th .
No Qualifications	The % of pupils who did not achieve a recognised qualification remains the same at 0.4%. This represents 9 pupils. Wales improved from 0.6% to 0.4% this year. Caerphilly's rank position has fallen from 10 th to 16 th , despite being equal to the Wales mean.

Banding 2012

A greener place Man gwyrddach

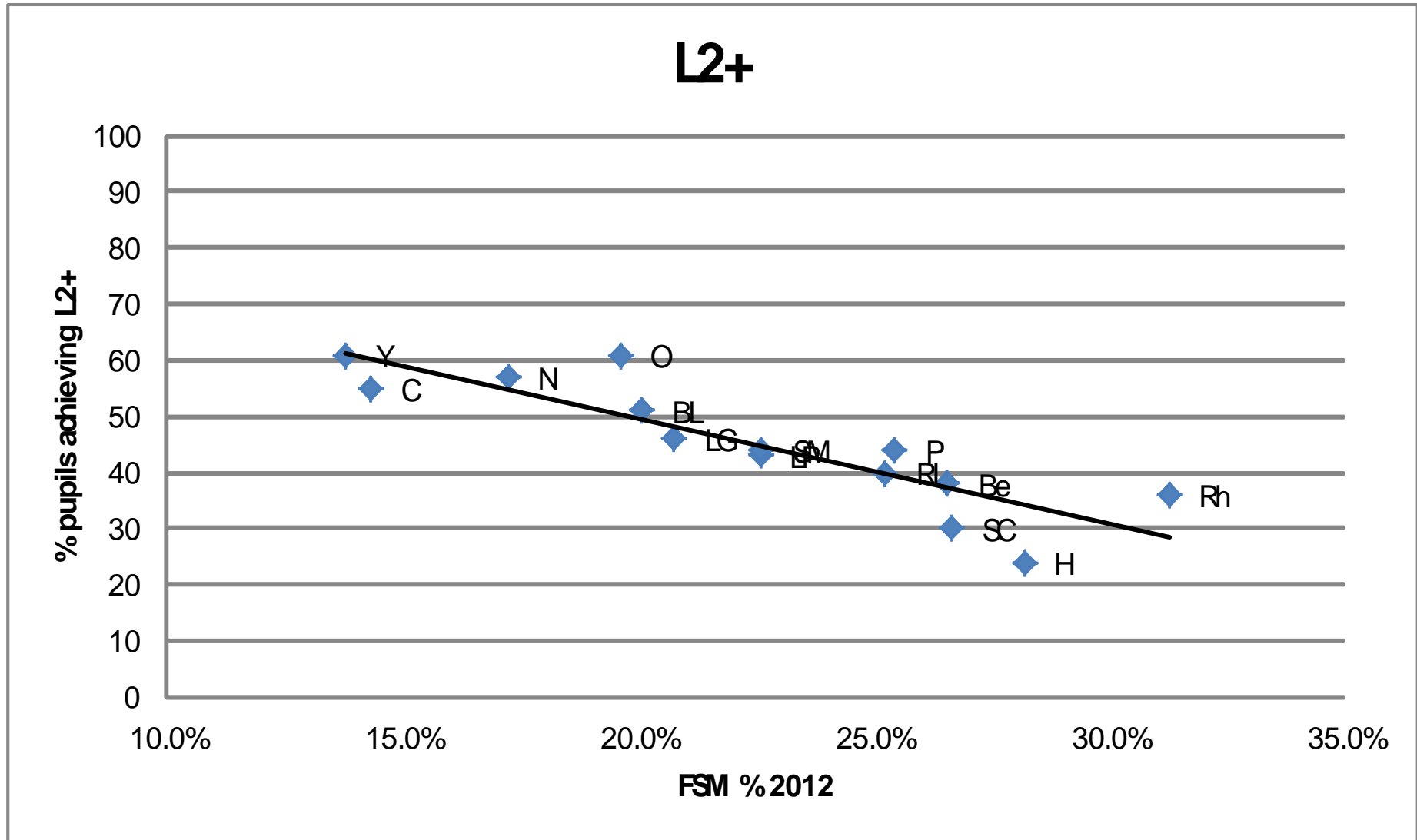


Individual School Summary – KS4

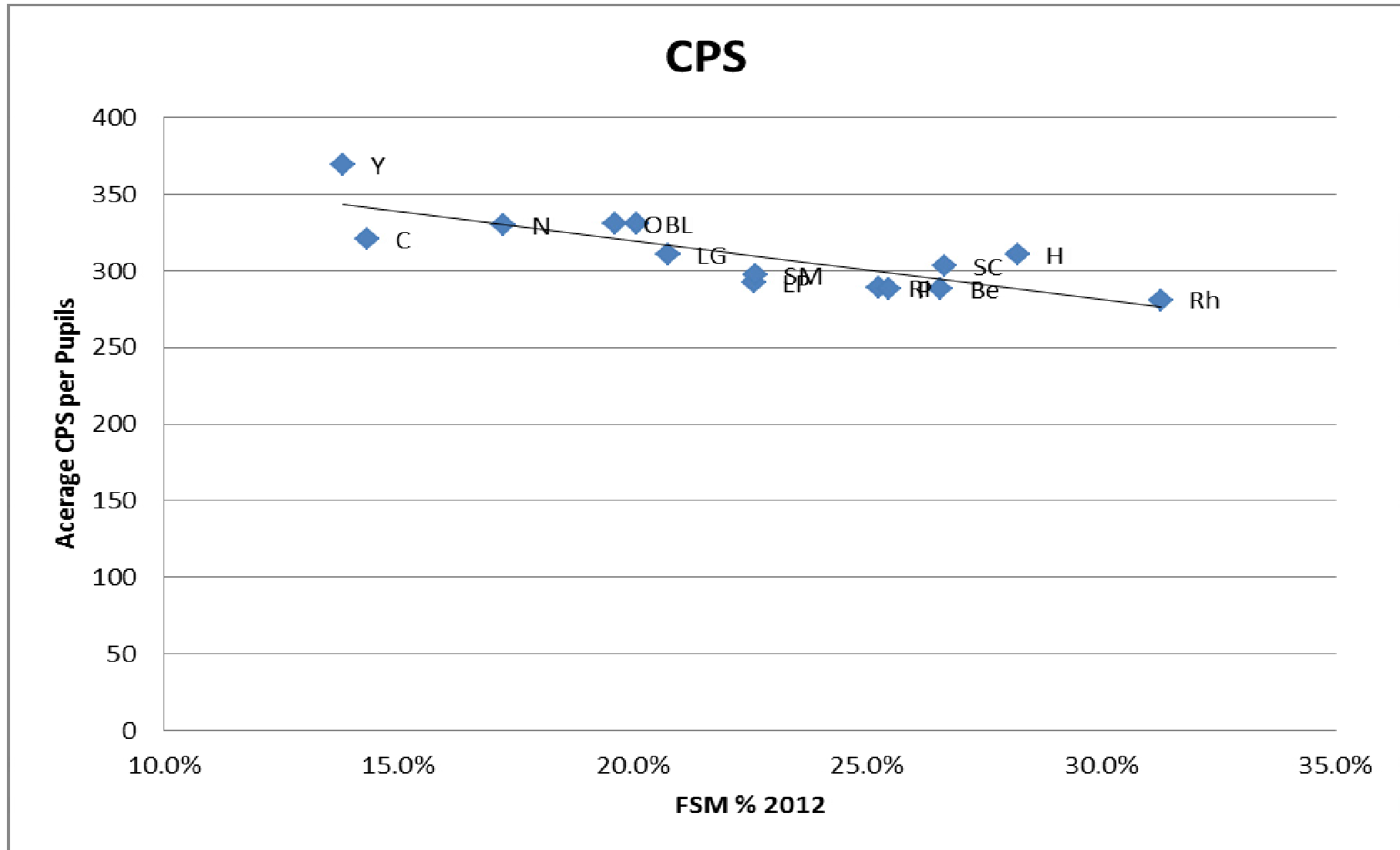
School *1 – Single Sex	FSM % 2012	L1		L2		L2+		CPS	
		2011	2012	2011	2012	2011	2012	2011	2012
YGCR	13.8%	95	96	88	89	62	61	353	369
Cwmcarn	14.3%	97	97	67	61	55	55	321	321
Newbridge	17.2%	92	88	74	69	66	57	336	330
Oakdale	19.6%	98	90	83	80	55	61	338	331
Blackwood	20.1%	92	96	61	68	38	51	310	331
Lewis Girls *1	20.7%	92	92	61	65	33	46	297	311
Lewis School *1	22.6%	89	87	67	71	42	43	293	292
St. Martin's	22.6%	89	89	67	59	57	44	305	297
Risca	25.3%	90	92	45	54	28	40	282	289
Pontllanfraith	25.5%	82	92	45	51	39	44	250	288
Bedwas	26.6%	90	86	44	54	26	38	281	288
St. Cenydd	26.7%	86	92	56	59	29	30	289	303
Heolddu	28.2%	94	95	66	60	35	24	308	311
Rhymney	31.3%	83	91	48	50	34	36	269	281

- The L2+ and CPS make the main contribution to a school's band.
- School are ranked in order of FSM, so would expect more 'green' towards top of table, 'red' towards the bottom.
- Looking for exceptions to that finds above / below expected performance.
- Look for differences between 2011 and 2012.

FSM vs L2+ Scatter Plot



FSM vs CPS Scatter Plot



Individual Schools 2012

A greener place Man gwyrddach



Secondary School Banding Notification - 2011

School Name
LA / School Number
Issue Date 06/12/2011

Capped
Point
Score

Level 2 threshold including English/Welsh and mathematics	
2011 performance	4
2011 performance set against FSM	2
Relative progress over 3 years	1
Contextual value added	1
Group score	8

L2 including
E/W&M

Capped points score	
2011 performance	4
2011 performance set against FSM	3
Relative progress over 2 years	3
Contextual value added	2
Group score	12

E/W&M

English/Welsh and mathematics	
English/Welsh 2011 performance set against FSM	2
Mathematics 2011 performance set against FSM	2
Group score	4

Attendance

Attendance	
2011 performance set against FSM	4
Relative progress over 3 years	4
Group score	8

Summary

The four group scores are totalled to give an overall score	
Level 2 threshold including English/Welsh and mathematics	8
Capped points score	12
English/Welsh and mathematics	4
Attendance (50% weighting)	4
Total overall score	28

Key

- 1 = Performance in the top 25% of schools in Wales
- 2 = Performance in the top 50% of schools in Wales
- 3 = Performance in the lower 50% of schools in Wales
- 4 = Performance in the lowest 25% of schools in Wales

Distribution across Wales

	# Schools	% Schools
Band 1	29	13%
Band 2	52	24%
Band 3	59	27%
Band 4	52	24%
Band 5	29	13%

A greener place Man gwyrdach



Caerphilly Schools 2012

School	FSM % 2012	2011	2012	Rise / Fall
Oakdale	19.6%	1	1	-
YGCR	13.8%	1	1	-
Newbridge	17.2%	1	2	-1
Blackwood	20.1%	4	2	2
Rhymney	31.3%	3	3	-
Pontllanfraith	25.5%	3	3	-
Risca	25.3%	5	3	2
Cwmcarn	14.3%	3	4	-1
Heolddu	28.2%	3	4	-1
Lewis School	22.6%	4	4	-
Bedwas	26.6%	4	4	-
St. Cenydd	26.7%	5	4	1
Lewis Girls	20.7%	5	4	1
St. Martins	22.6%	2	5	-3